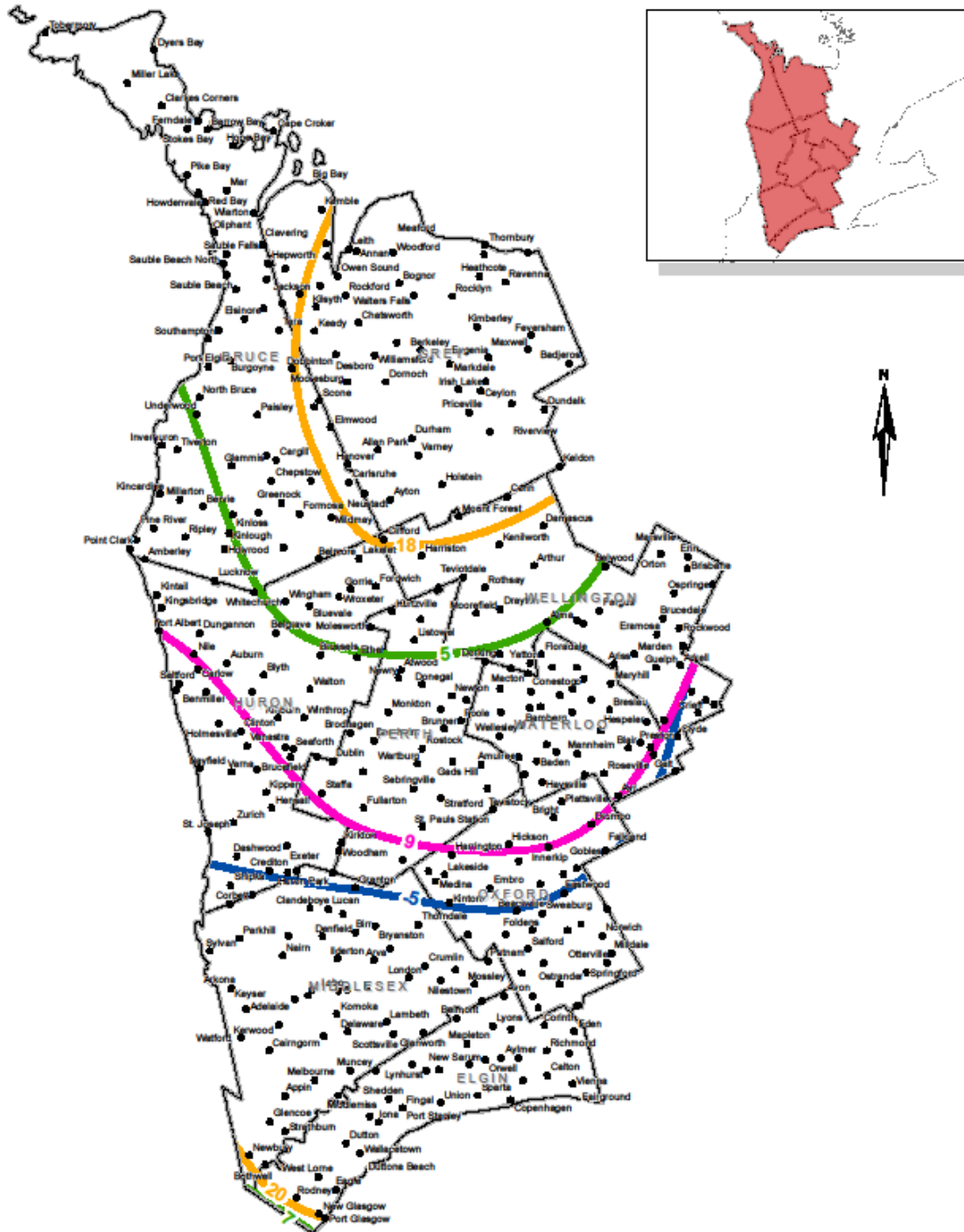
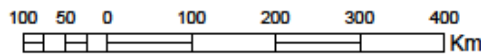


Appendix A: Temperature Isotherm Maps from 1981 to 2010

ISOTHERMS BRUCE, ELGIN, GREY, HURON, MIDDLESEX, OXFORD, PERTH, WATERLOO, WELLINGTON



1:1,150,000



- City/Town
- Isotherms (°C) - Average (1981 - 2010)**
- Season**
- Fall
- Spring
- Summer
- Winter
- County Boundary

Temperature Trend (°C)

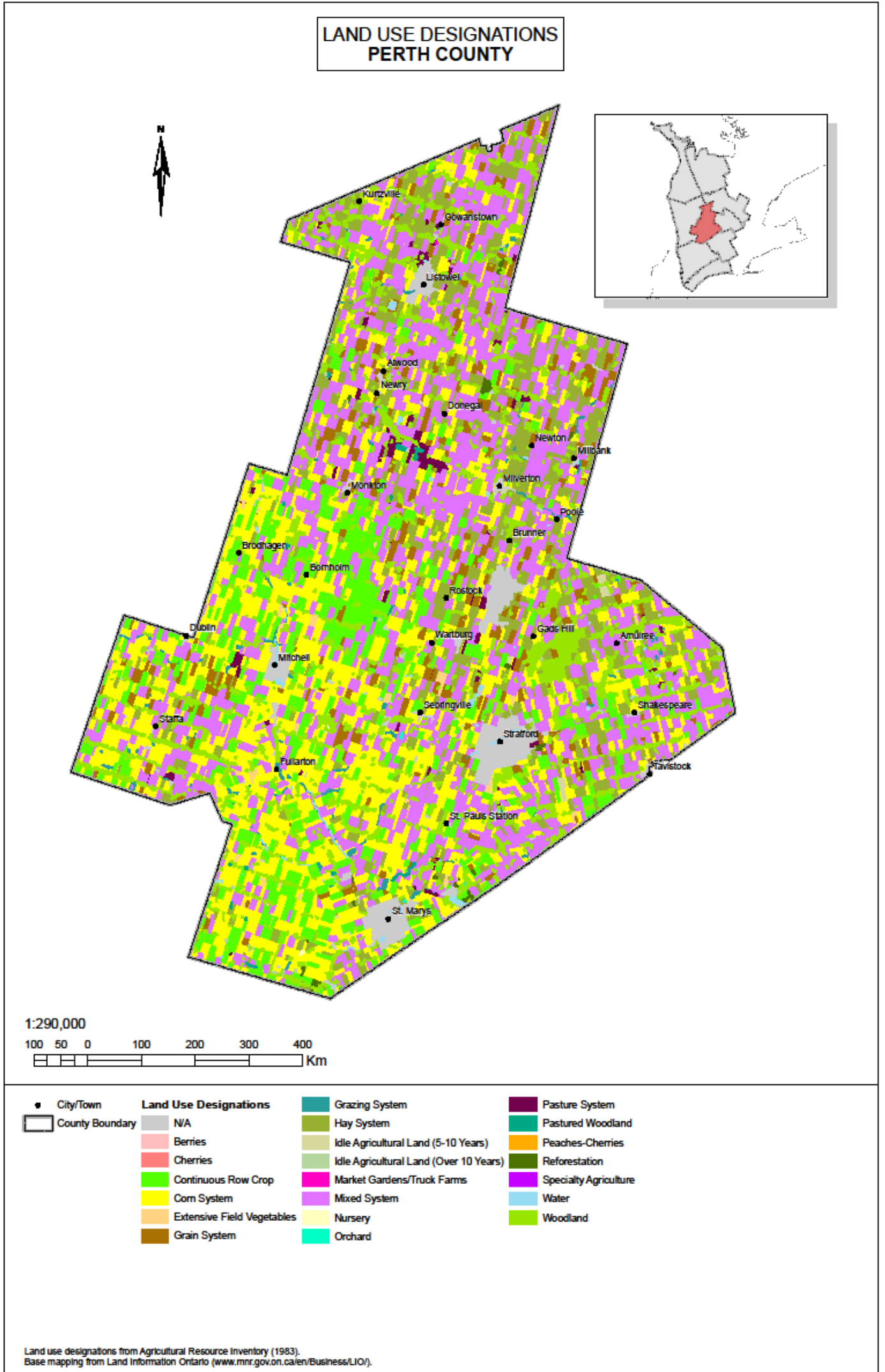
Lower Temperature



Higher Temperature

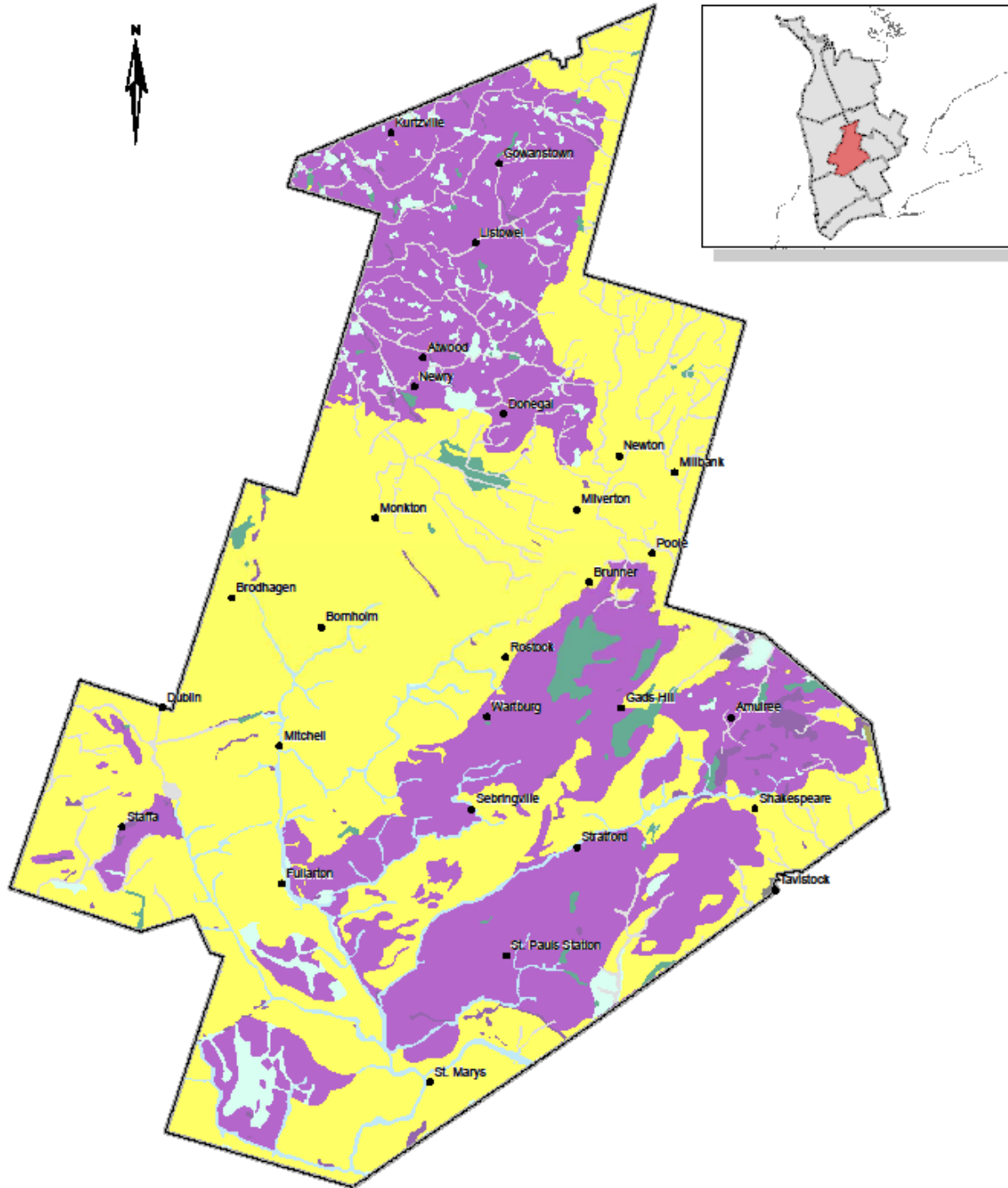
Isotherm data from Environment Canada (www.weatheroffice.gc.ca/saisons/index_e.html#climatology).
Base mapping from Land Information Ontario (www.mnr.gov.on.ca/en/Business/LIO/).

Appendix B: Maps of Current Agricultural Land Uses in Midwestern Ontario



Appendix D: Maps of Surface Soil Texture in Midwestern Ontario

SURFACE SOIL TEXTURE OF SURFACE OR 'A' HORIZON PERTH COUNTY



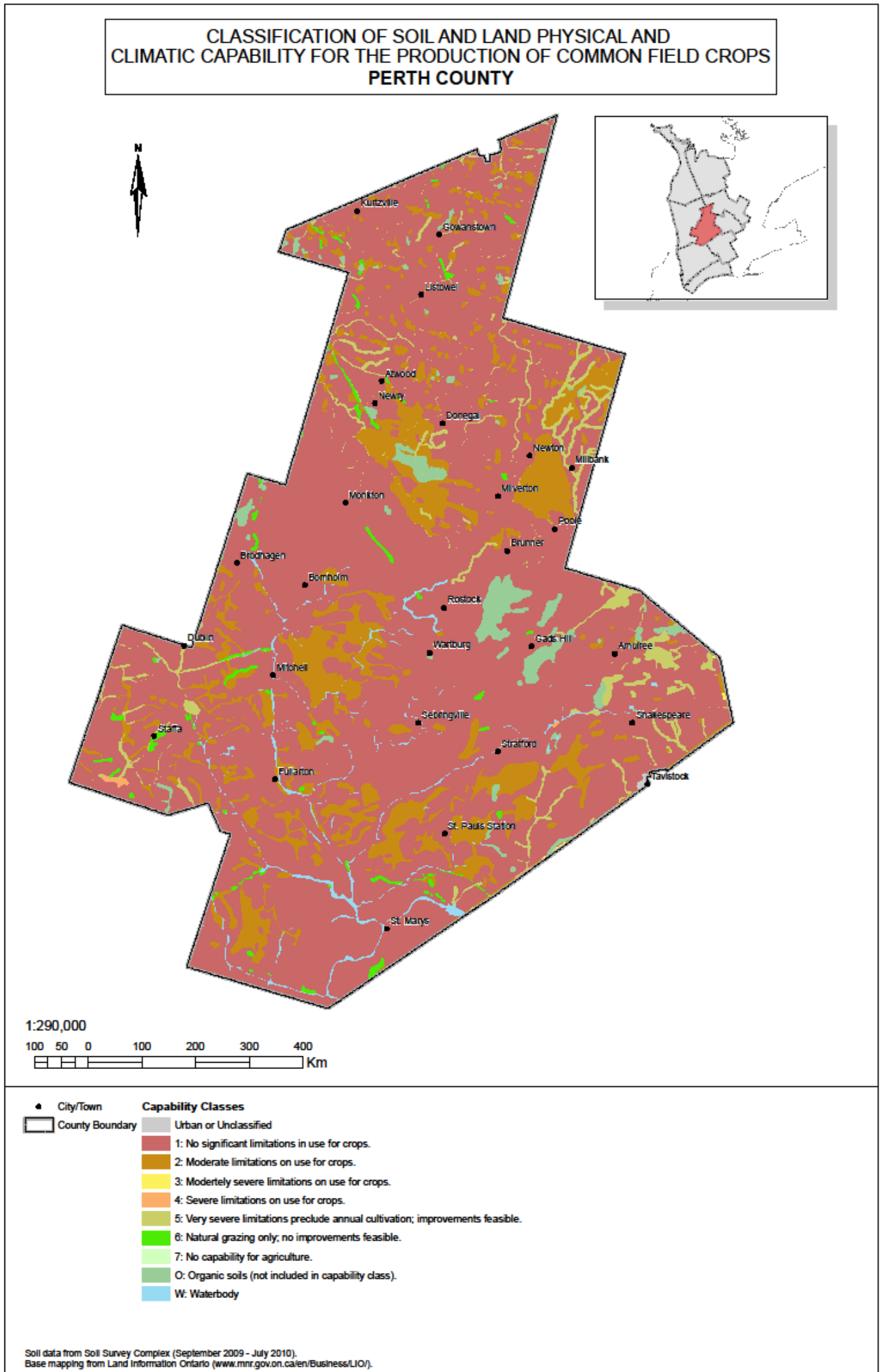
1:290,000

100 50 0 100 200 300 400
Km

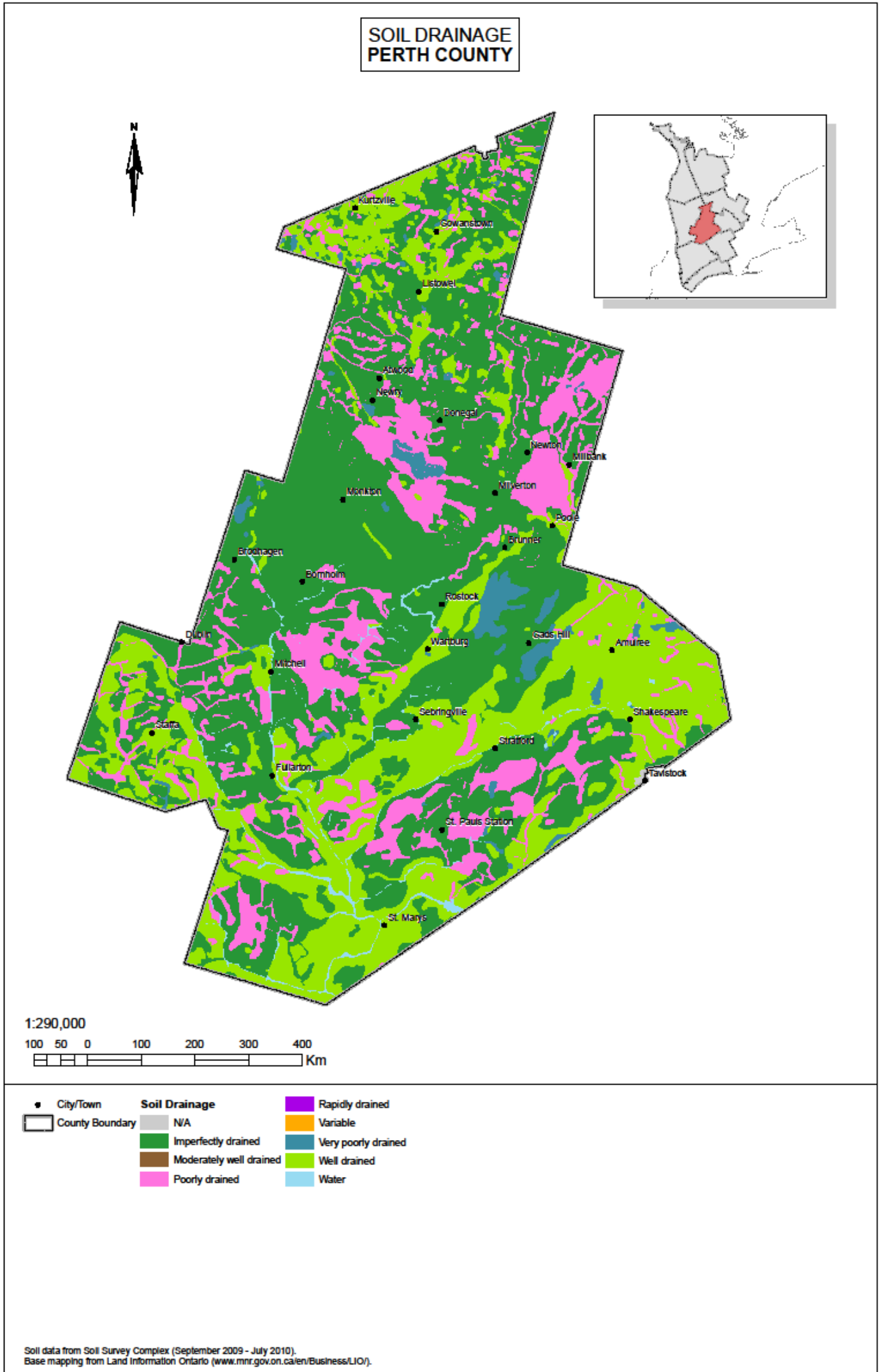
● City/Town	Surface Soil Texture	Gravelly Sand	Silty Clay Loam
▭ County Boundary	Undefined	Gravelly Sandy Loam	Silt Loam
	Clay	Loam	Sandy Loam
	Clay Loam	Loamy Fine Sand	Variable
	Fine Sand	Loamy Sand	Very Fine Sandy Loam
	Fine Sandy Loam	Organic	Primarily Exposed Bedrock
	Gravelly Loam	Sand	Urban or Disturbed Land
	Gravel	Silty Clay	Water

Soil data from Soil Survey Complex (September 2009 - July 2010).
Base mapping from Land Information Ontario (www.mnr.gov.on.ca/en/Business/LIO/).

Appendix E: Maps of Soil Capability Classes in Nine Counties in Midwestern Ontario

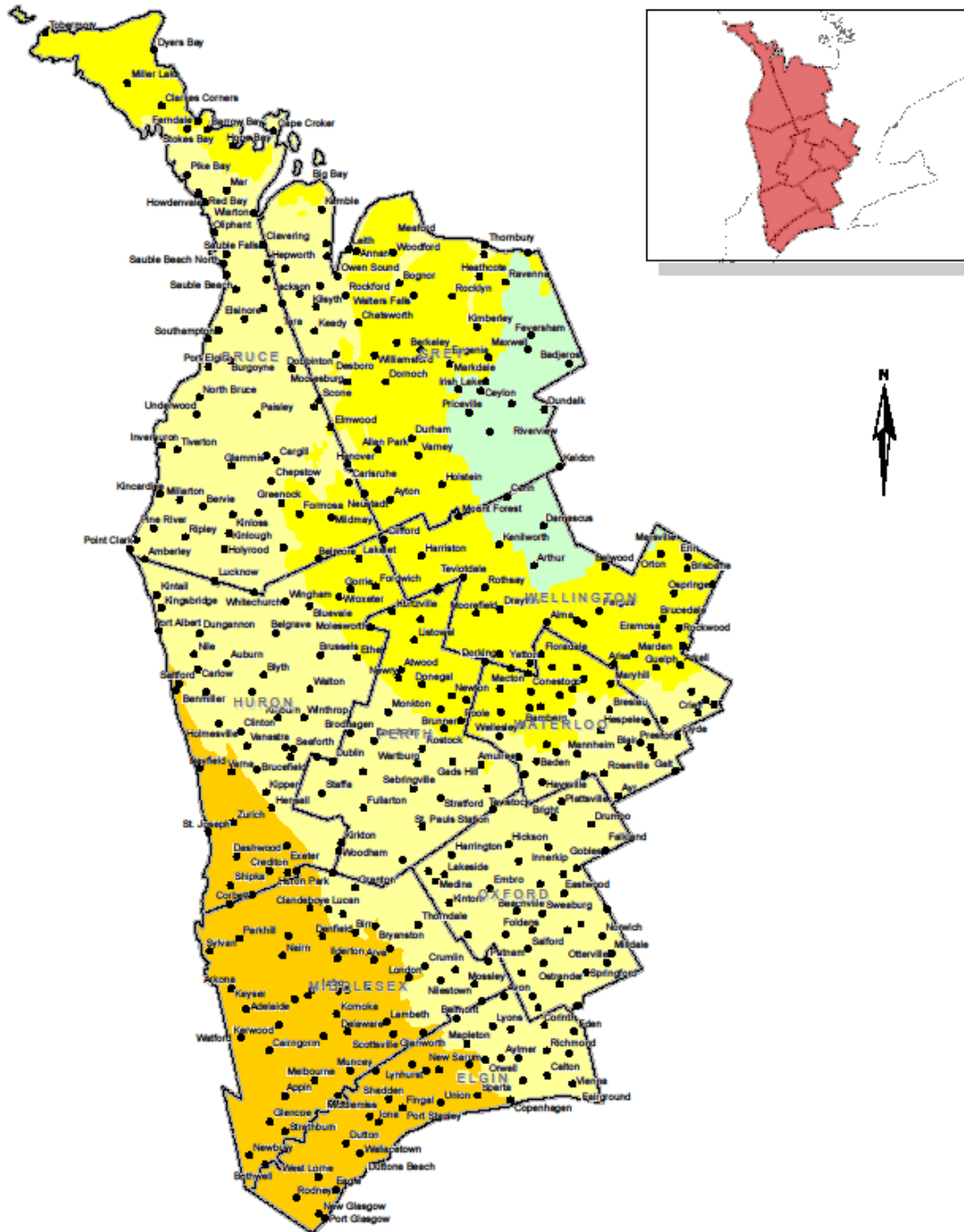


Appendix F: Maps of Surface Soil Drainage in Nine Counties in Midwestern Ontario



Appendix G: Plant Hardiness Zones in Midwestern Ontario

PLANT HARDINESS ZONES BRUCE, ELGIN, GREY, HURON, MIDDLESEX, OXFORD, PERTH, WATERLOO, WELLINGTON



1:1,150,000

100 50 0 100 200 300 400 Km

- City/Town
 - County Boundary
- Plant Hardiness Zones**
- 4b (-37.7 °C to -28.9 °C)
 - 5a (-28.9 °C to -26.1 °C)
 - 5b (-26.1 °C to -23.3 °C)
 - 6a (-23.3 °C to -20.6 °C)

Plant hardiness values from Natural Resources Canada (1961-1990).
Base mapping from Land Information Ontario (www.mnr.gov.on.ca/en/Business/LIO/).

